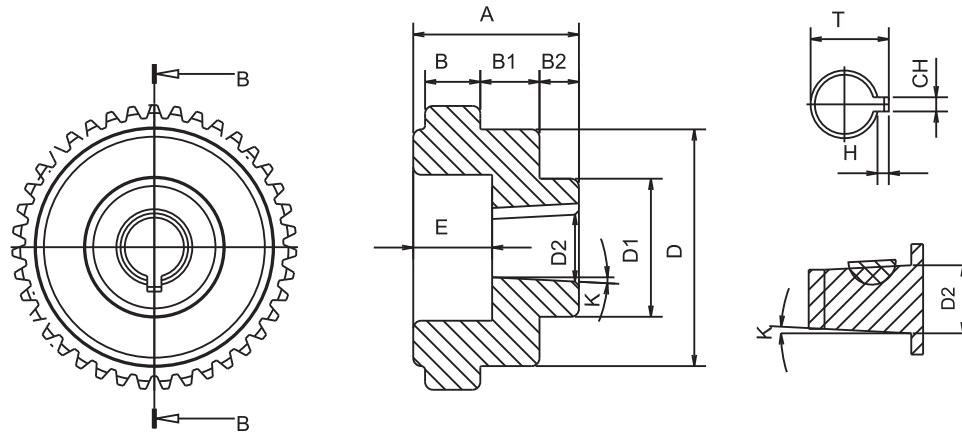


Sect. A-A

REFERENCE			MOTOR SIDE COUPLING GEAR							
KW.	HP	E.MOTOR	CODE	A	B	D	D2	CH	T	Z
37 / 45	50 / 60	225	DK6003	68	18	91				55
			DK602403							
			DK602803							
			DK603203							
			DK603803							
			DK604203							
			DK604803							
			DK605003							
			DK605503							
DK606003										



Sect. B-B

PUMP SIDE COUPLING GEAR													
CODE	A	B	B1	B2	D	D1	D2	E	CH	T	H	K	Z
DK601P03	68	18	-	-	91	-	16.66	-	4	-	2	1/8	55
DK602503			-	25		-	6	28	3	-			
DK602PD03			-	22.15		-	6.35	22.15	3.2	-			
DK602PK03			-	22.15		-	4	-	2	1/8			
DK553PD-1-A-03			-	25.4		-	6	28.40	3	-			
DK553PD-2-A-03			-	31.75		-	8	35.75	4	-			
DK553PD-3-A-03			-	32		-	8	36	4	-			
DK60-G2B-03			-	12.5		-	3	-	1.5	1/5			
DK60-1M03			-	13.9		-	3	-	1.5	1/8			
DK60-G2-1403			-	14.3		-	4	-	2				
DK60-2-03			-	17.2		-	4	-	2				
DK60-2-03T			-	17.2		-	3.2	-	1.6				
DK60-G3-03			-	18.36		-	4	-	2	1/5			
DK60-G3B-03			-	19.3		-	5	-	2.5				
DK60-SAE-A-03			-	19.05		-	5	21.55	2.5		-		
DK60-G3,5-03			-	21.08		-	5	-	2.5	1/8			
DK60-ZG-03			-	25.2		-	5	-	2.5	1/5			
DK60-35-03T			-	25.6		-	4.76	-	2.4	1/8			
DK60-35-03			-	25.6		-	5	-	2.5				
DK60-4-03T			-	33.3		-	6.35	-	3.2				
DK60-4-03			-	33.3		-	7	-	3.5				